



Lansdowne Terrace, North Shields

Asking Price £175,000

 4  1  1  D

RICHARDSONS 

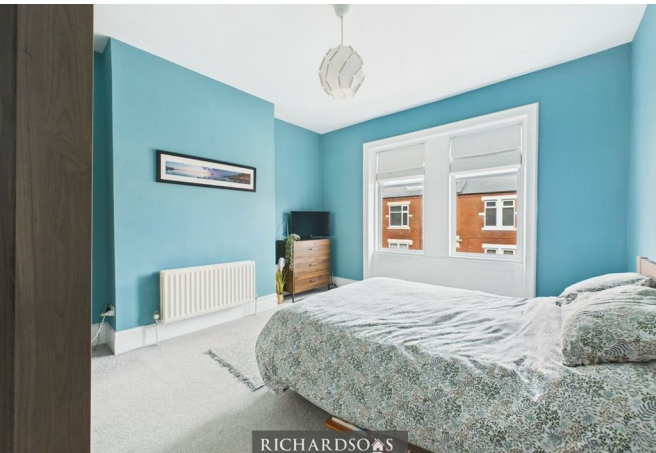
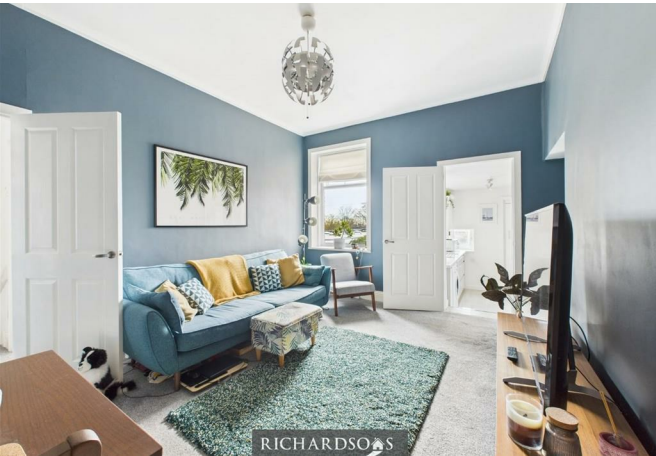


RICHARDSONS



Lansdowne Terrace North Shields, NE29 0NL

- Maisonette
- On Street Parking
- Natural light
- Private Yard
- Four Double Bedrooms
- Spacious rooms
- Good Location
- EPC Rating D



Asking Price £175,000



Located in the heart of North Shields, this beautifully presented 4-bedroom property benefits from an abundance of natural light throughout. The home features two main bedrooms and two spacious bedrooms on the third floor, providing generous living space. A private yard offers a perfect outdoor retreat.

North Shields boasts a wide range of amenities, including the vibrant, regenerated Fish Quay, known for its waterfront dining and leisure options. The property is conveniently situated near major road links, offering easy access to local towns, the coast, and Newcastle City Centre. Excellent bus services further enhance connectivity. Additionally, the property benefits from on-street parking, ensuring convenience for residents and visitors.

Council Tax - A
Tenure - Leasehold 967 years remaining



Approximate measurements

Please note all measurements are approximate only and further measurements should be taken by the viewer if exact measurements are required.

Kitchen	7'2" x 8'9" (2.20 x 2.69)
Living Room	11'8" x 14'9" (3.57 x 4.50)
Bedroom One	13'1" x 14'8" (4.01 x 4.48)
Bedroom Two	7'7" x 10'6" (2.32 x 3.21)
Bedroom Three	19'7" x 10'3" (5.99 x 3.14)
Bedroom Four	12'3" x 8'1" (3.75 x 2.47)
Bathroom	7'6" x 10'6" (2.30 x 3.22)





